

British Society Learner Autonomy Worksheet

1 Look at these words/phrases. Tick the ones you don't know. Then stand up, walk around the room, and find out the meanings of the ones you don't know from other students. Don't use a dictionary!

1 social classes

2 upward/downward mobility

3 distribution of wealth

4 status symbol

5 single occupancy households

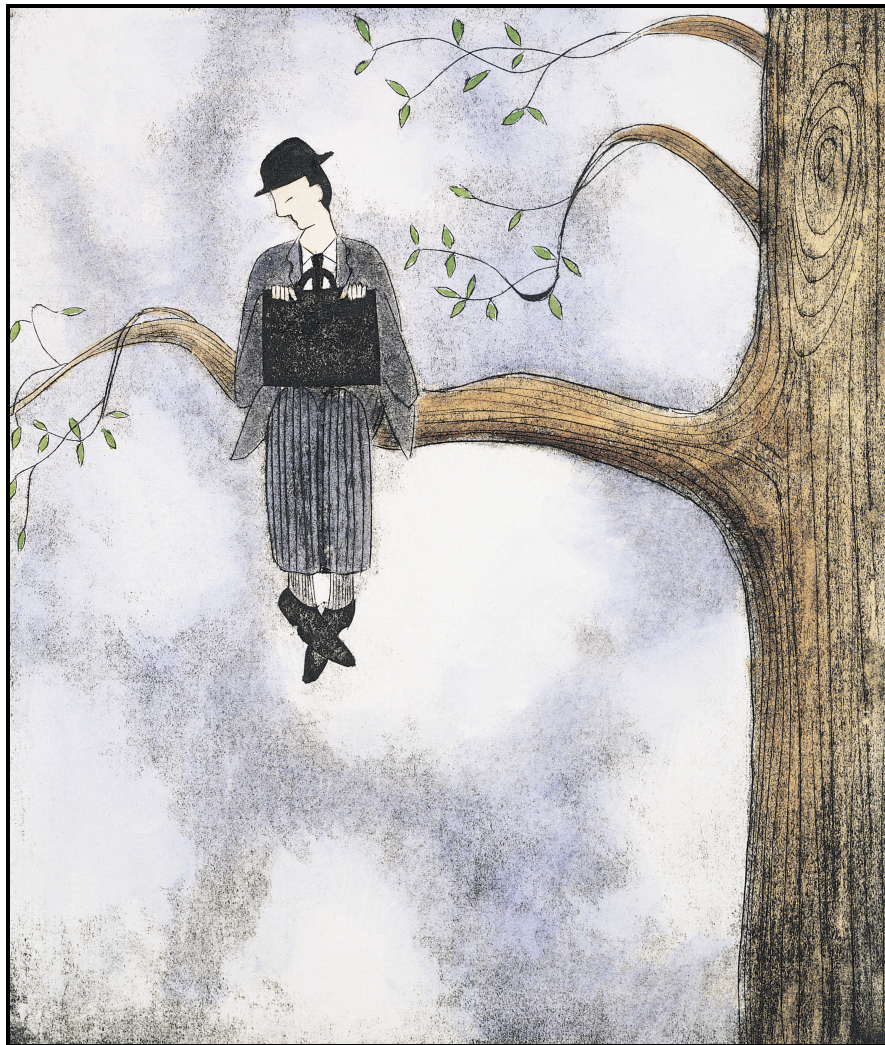
6 a living wage

7 city bonuses

8 work-life balance

9 a granny flat

10 a nursing home



British Society Learner Autonomy Worksheet

2 Now read the words in context. If there are still some words you don't know, stand up, walk around the room again, and find out from other students.

British Society

The UK is a country which is characterised by a very unequal *distribution of wealth*. While some of those at the top end – such as those working in finance – enjoy huge *city bonuses*, those at the bottom struggle to make a *living wage*. The various *social classes* share the same city. In some parts of London you can see *status symbols* (such as Rolls Royce cars), but in others you can see terrible poverty. There is little *upward or downward mobility* between the classes.

Some foreigners are shocked to see how we British live. For example, there are more and more *single occupancy households*, and the old, rather than sharing accommodation with their children or grandchildren, often live in *granny flats* or, if they are less independent, in a *nursing home*.

Many people don't like the way society is heading. They say that people are becoming too materialistic. They say that we need a healthier *work-life balance*.

3 Now look at these questions about the new words. Answer them in class.

- 1 If the distribution of wealth is unequal, does everyone earn a similar salary or a very different salary?
- 2 Who gets a city bonus – a banker or someone in manufacturing? Is a bonus a regular salary or money paid to reward performance?
- 3 If you make a living wage, do you earn enough to pay for your food, shelter, and bills, etc. – or *not* enough?
- 4 Give an example of a status symbol. What are the owners trying to indicate by using this product?
- 5 How would you describe the difference between the working class and the middle class?
- 6 Give an example of *a) upward mobility* and *b) downward mobility*.
- 7 How many people live in a single occupancy household?
- 8 Are granny flats to be found under the same roof as that of the family – or under a different roof? Does the grandmother/grandfather have his/her own cooking and bathing facilities?
- 9 What kind of people live in nursing homes?
- 10 If you work 80 hours a week do you have a good or bad work-life balance? Why?